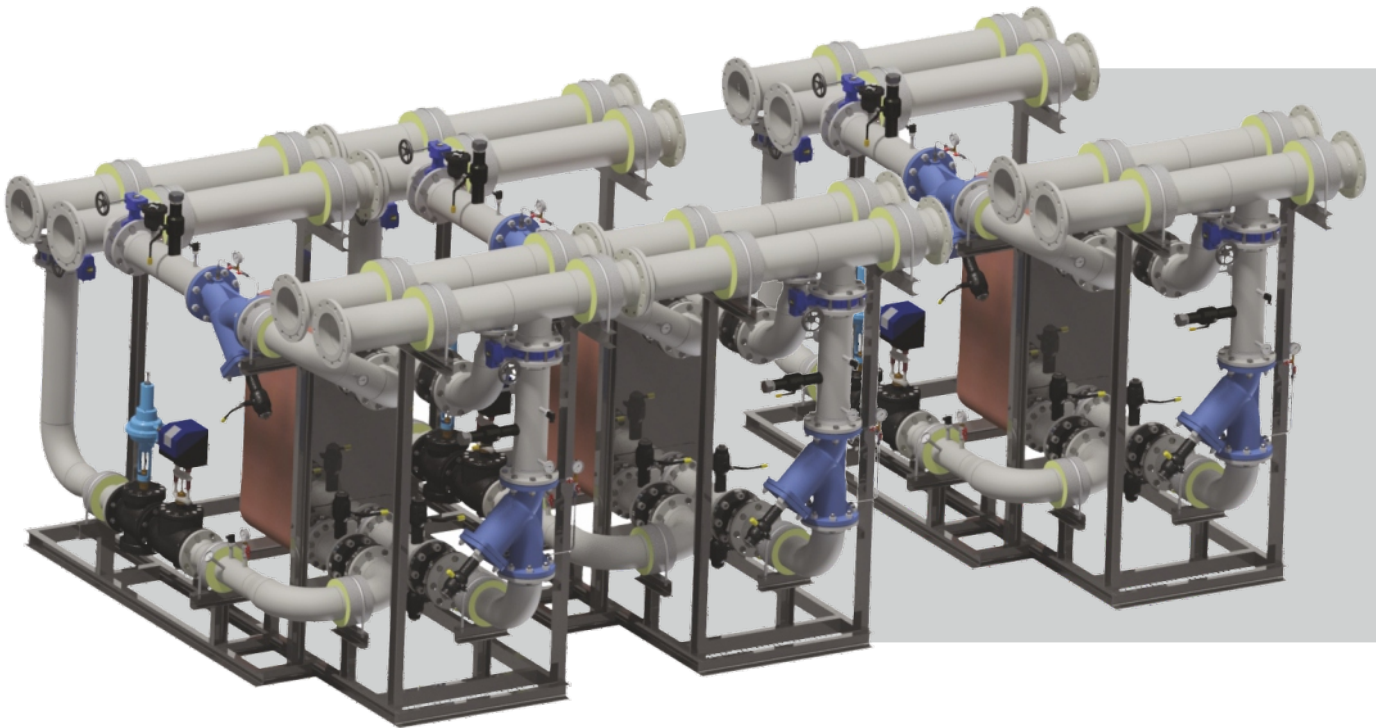


Dalsia flexCool

Modular Energy Transfer Station

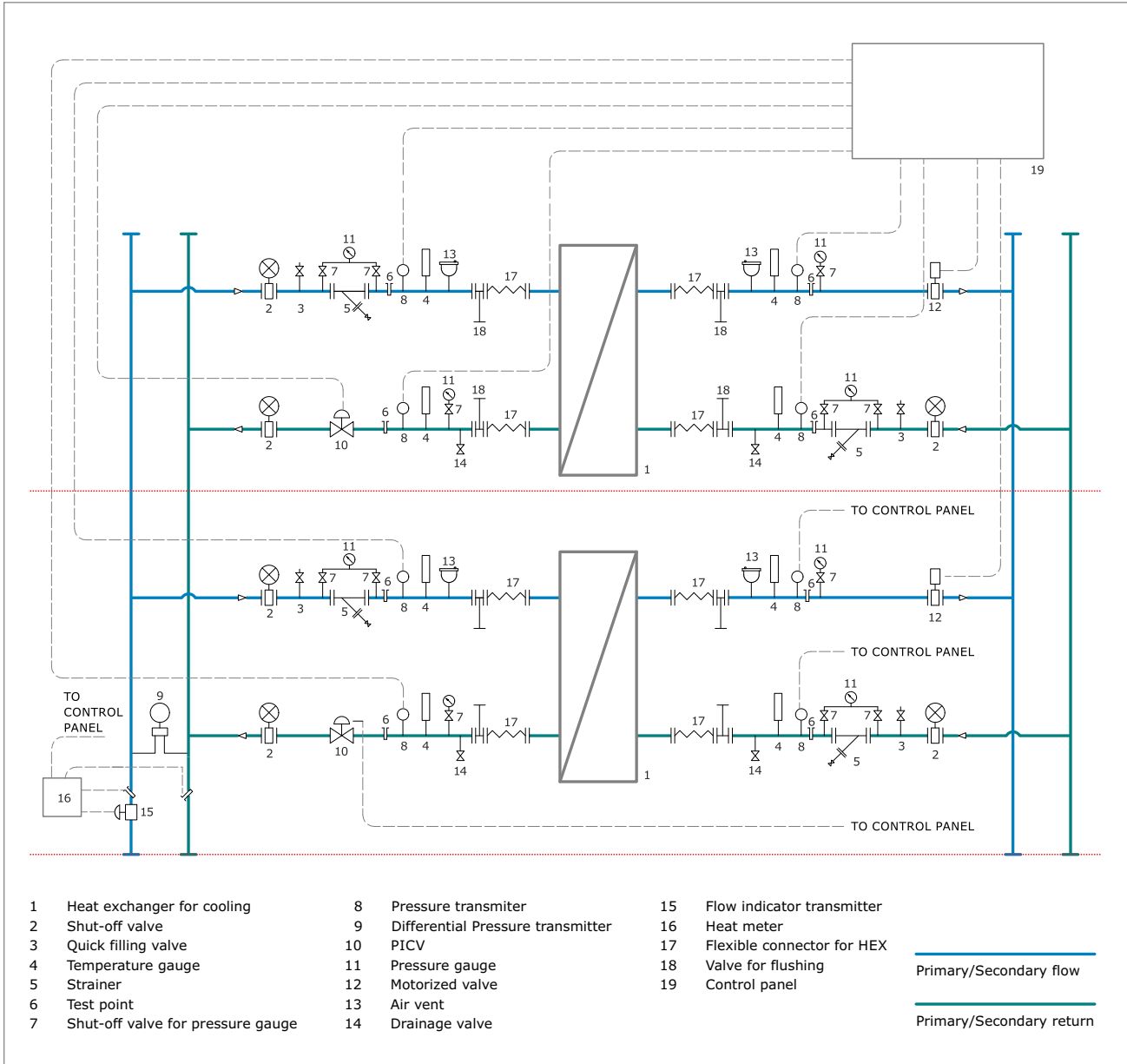


Dalsia flexCool is a modular energy transfer station that provides cold water to your building for the air-conditioning and tap water installations. Dalsia flexCool can be easily adjusted according to the required cooling load because up to four modules can be added sequentially to the main unit, which ensures that the efficiency of heat transfer is kept high. This feature also reduces the risk of fouling and maximizes the temperature differences at low loads.

- Compact & flexible design – Minimum space required; module dimensions 1 705 x 3 320 x 2 335 mm. Dalsia FlexCool could be connected from different directions, which minimizes the ETS room piping.
- Plug & Play solution – One has just to deliver the units to the room and connect them. All automation is pre-installed and tested.
- High efficiency heat exchangers - Compact brazed Swep heat exchangers have heat transfer coefficient of 6 000 W/m² °C. No gaskets and need of disassembling. They come with 5 years warranty.
- High rangeability – from 300 TR to 2 400 TR.
- Pressure independent differential valves – minimizing pumping costs.

Dalsia flexCool – easy and convenient

PI-diagram



Example configurations of Dalsia flexCool ETS module

	Heat exchanger connections	Primary connection	Cooling load	Primary pressure loss	Secondary pressure loss	Dimensions WxLxH
	inch	inch	TR	< kPa	< kPa	mm
Dalsia flexCool 630	6"	8"	630	160	100	1 705 x 3 320 x 2 335
Dalsia flexCool 1260	6"	8"	1260	160	100	3 410 x 3 320 x 2 335
Dalsia flexCool 1890	6"	8"	1890	160	100	5 115 x 3 320 x 2 335
Dalsia flexCool 2520	6"	8"	2520	160	100	6 820 x 3 320 x 2 335

Dalsia

85 Baxton Blvd. · BG-1618 Sofia
Tel. +359 2 9155 701 · Fax +359 2 9155 755
www.dalsia.bg
sales@dalsia.bg